

Hampshire Water Transfer and Water Recycling Project

Environmental Statement – Figure 8.1 Statutory designated sites within the desk study area

VOLUME NUMBER: 6

PLANNING INSPECTORATE SCHEME NUMBER: WA010002

APPLICATION DOCUMENT REFERENCE: 6.3

APFP REGULATION: 5(2)(a)

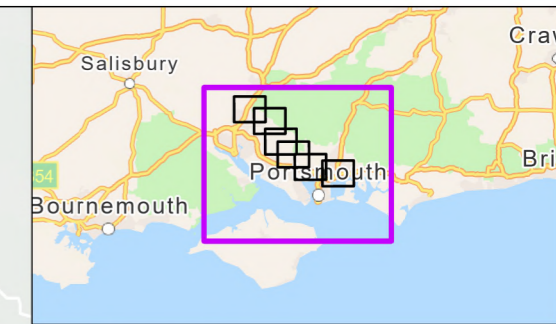
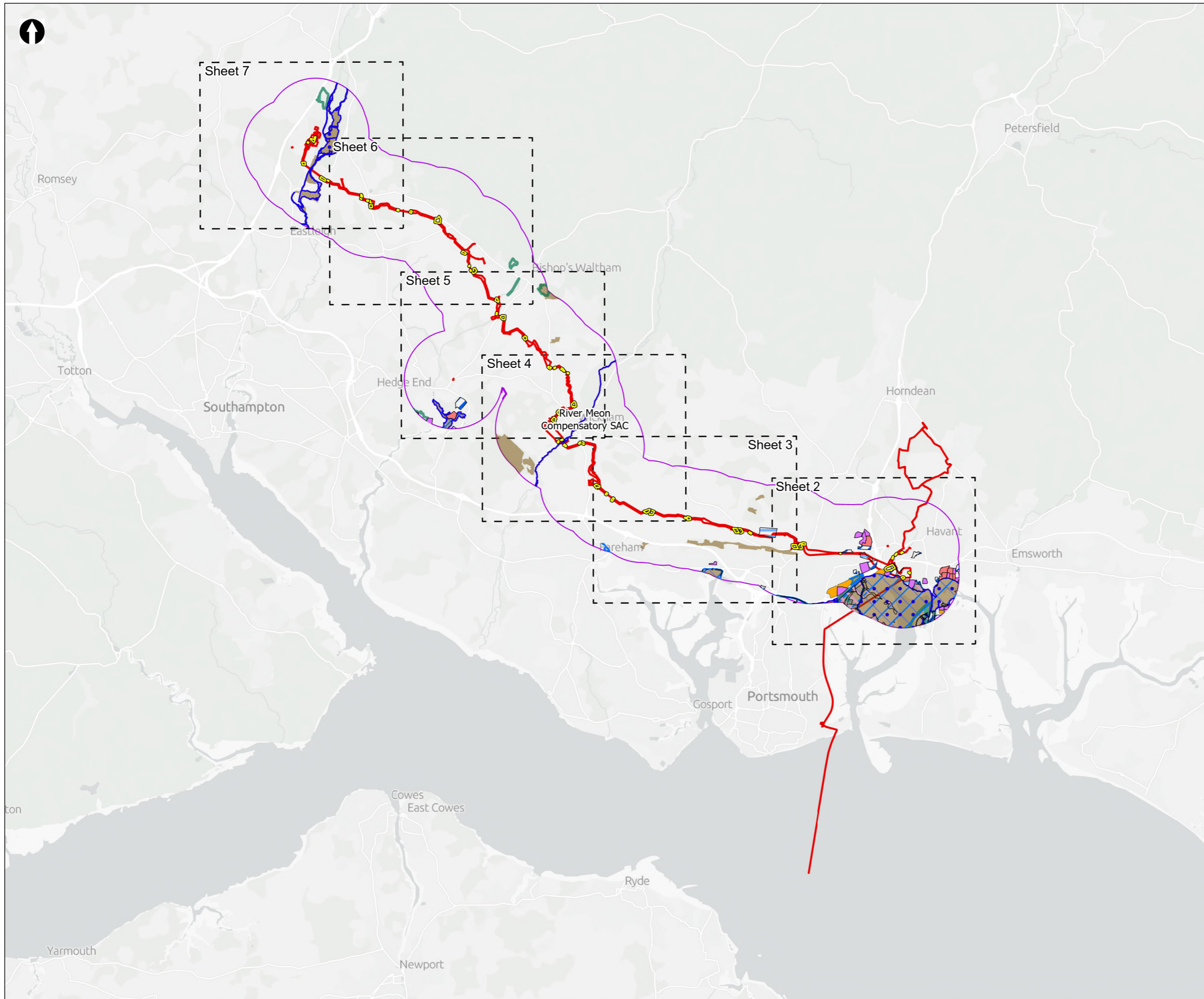
May 2026

Version 0



from
**Southern
Water.** 

The Southern Water logo consists of three stylized, wavy blue lines of varying lengths, positioned to the right of the text 'Southern Water'.



— Order Limits
 Sheet Extent Boxes 1:25K
 Desk Study Area
 Construction Compounds

Designated Sites

- Special Areas of Conservation (SAC)
- Special Protection Areas (SPA)
- Ramsar site
- Sites of Special Scientific Interest (SSSI)
- Local Nature Reserve (LNR)
- River Meon Compensatory SAC Habitat

Solent Waders Brent Goose Strategy

- Core Area
- Primary Support Area
- Secondary Support Area
- SPA Site
- Low Use Site
- Candidate Site

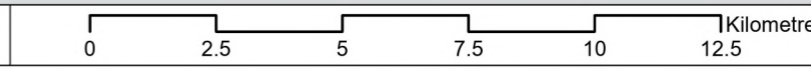
Coordinate system: British National Grid; Datum: OSGB 1936
 Data sources: © Crown copyright and database rights 2026 Ordnance Survey 0100031673. Sources: Esri, TomTom, Garmin, FAO, NOAA, USGS, © OpenStreetMap contributors, and the GIS User Community, Contains OS data © Crown Copyright and database right 2025. Contains data from OS Zoomstack

PROJECT TITLE
 Hampshire Water Transfer and Water Recycling Project



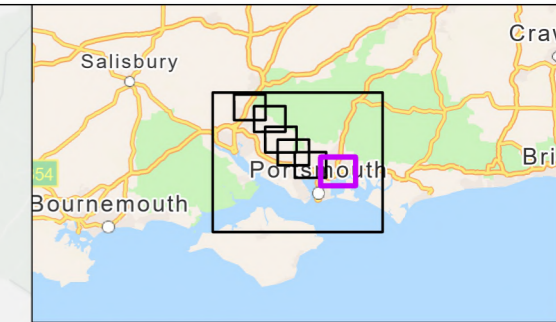
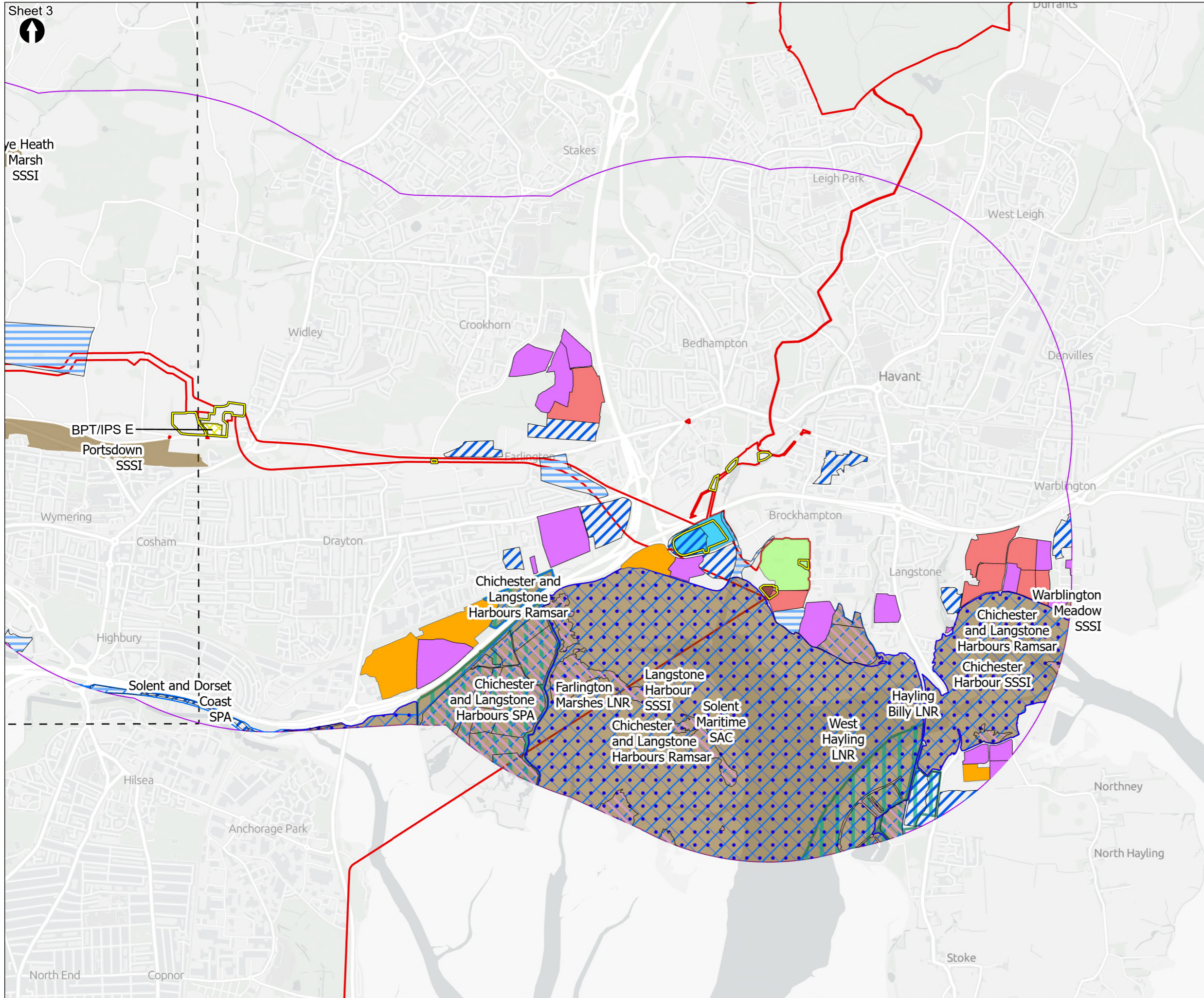
Figure 8.1
 Statutory designated sites within the desk study area
 Sheet 1 of 7

| | | | |
|---------------------------------|--------------------------|-----------------------|------------------------|
| Drawn MW | GIS Checked DL | Checked MP | Approved AK |
| Scale at A3 1:150,000 | Status Final | Revision 05 | Security STD |





ye Heath Marsh SSSI



- Order Limits
- Sheet Extent Boxes 1:25K
- Desk Study Area
- Construction Compounds
- Proposed Development components**
- Budds Farm Wastewater Treatment Works
- Limits of Deviation for Budds Farm Pumping Station
- Water Recycling Plant site
- Above Ground Plant**
- Break Pressure Tank & Intermediate Pumping Station
- Designated Sites**
- Special Areas of Conservation (SAC)
- Special Protection Areas (SPA)
- Ramsar site
- Sites of Special Scientific Interest (SSSI)
- Local Nature Reserve (LNR)
- Solent Waders Brent Goose Strategy**
- Core Area
- Primary Support Area
- Secondary Support Area
- SPA Site
- Low Use Site
- Candidate Site

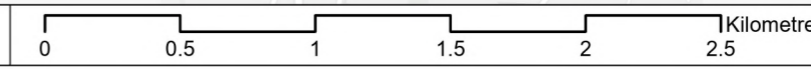
Coordinate system: British National Grid; Datum: OSGB 1936
 Data sources: © Crown copyright and database rights 2026 Ordnance Survey 0100031673. Sources: Esri, TomTom, Garmin, FAO, NOAA, USGS, © OpenStreetMap contributors, and the GIS User Community, Contains OS data © Crown Copyright and database right 2025. Contains data from OS Zoomstack

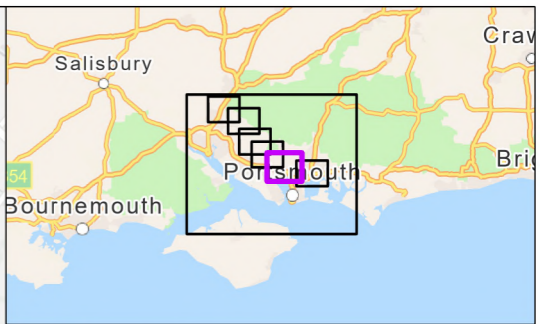
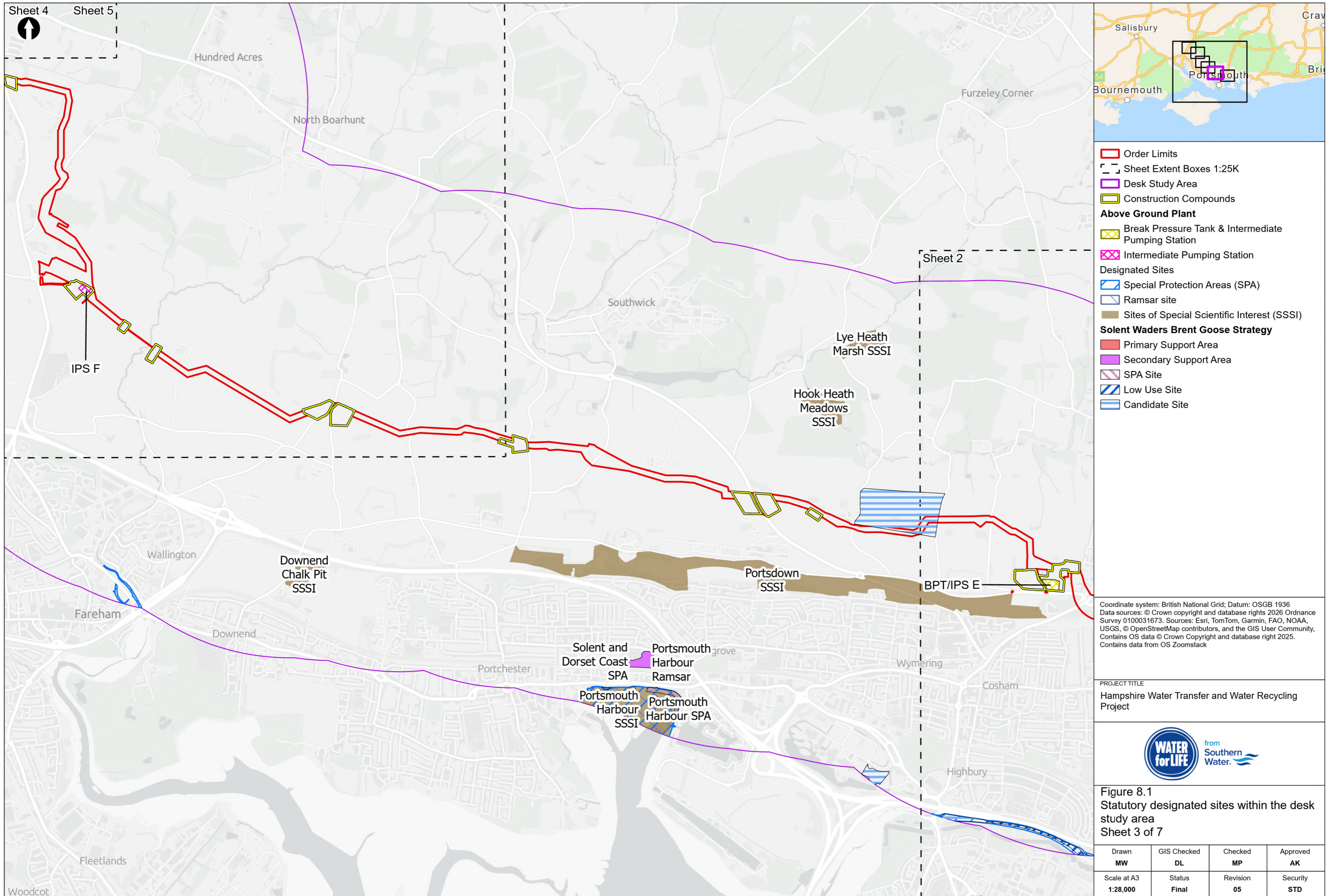
PROJECT TITLE
 Hampshire Water Transfer and Water Recycling Project



Figure 8.1
 Statutory designated sites within the desk study area
 Sheet 2 of 7

| | | | |
|--------------------------------|--------------------------|-----------------------|------------------------|
| Drawn MW | GIS Checked DL | Checked MP | Approved AK |
| Scale at A3 1:28,000 | Status Final | Revision 05 | Security STD |





- Order Limits
- Sheet Extent Boxes 1:25K
- Desk Study Area
- Construction Compounds
- Above Ground Plant**
- Break Pressure Tank & Intermediate Pumping Station
- Intermediate Pumping Station
- Designated Sites**
- Special Protection Areas (SPA)
- Ramsar site
- Sites of Special Scientific Interest (SSSI)
- Solent Waders Brent Goose Strategy**
- Primary Support Area
- Secondary Support Area
- SPA Site
- Low Use Site
- Candidate Site

Coordinate system: British National Grid; Datum: OSGB 1936
 Data sources: © Crown copyright and database rights 2026 Ordnance Survey 0100031673. Sources: Esri, TomTom, Garmin, FAO, NOAA, USGS, © OpenStreetMap contributors, and the GIS User Community, Contains OS data © Crown Copyright and database right 2025. Contains data from OS Zoomstack

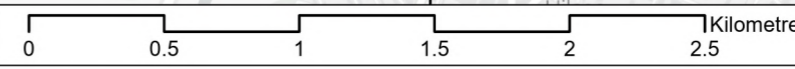
PROJECT TITLE
 Hampshire Water Transfer and Water Recycling Project

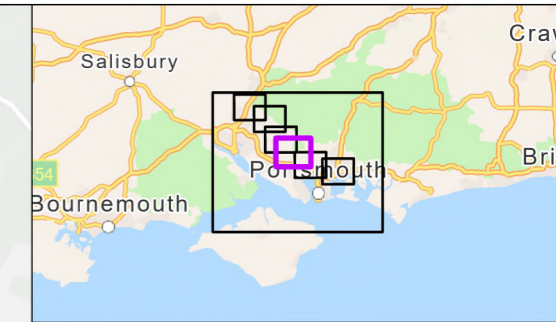
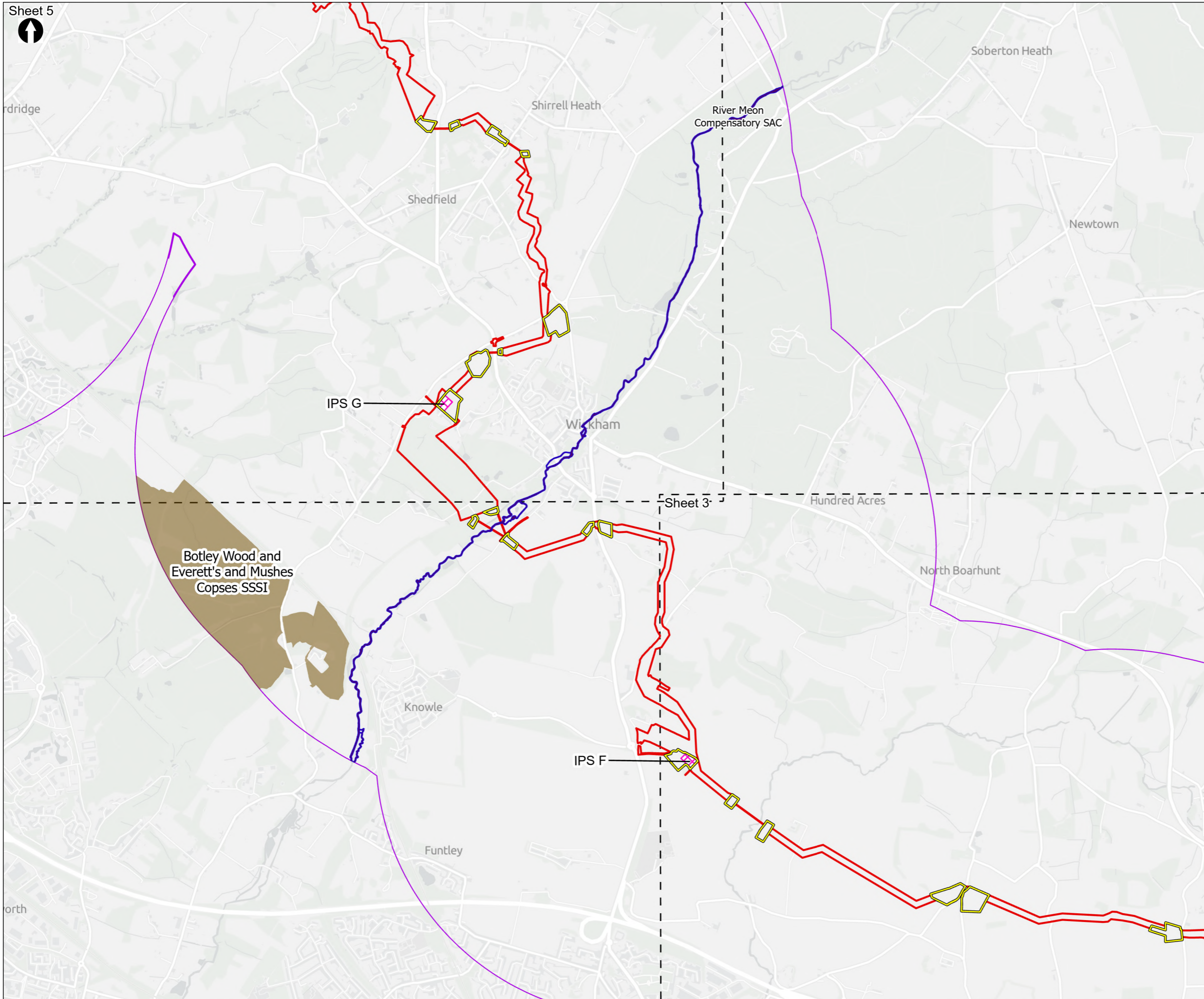


Figure 8.1
 Statutory designated sites within the desk study area
 Sheet 3 of 7

| | | | |
|--------------------------------|--------------------------|-----------------------|------------------------|
| Drawn MW | GIS Checked DL | Checked MP | Approved AK |
| Scale at A3 1:28,000 | Status Final | Revision 05 | Security STD |

Drawing Number
PC5223-RHD-ES-ZZ-D-Z-0026





- Order Limits
- Sheet Extent Boxes 1:25K
- Desk Study Area
- Construction Compounds
- Above Ground Plant**
- Intermediate Pumping Station
- Designated Sites**
- Sites of Special Scientific Interest (SSSI)
- River Meon Compensatory SAC Habitat

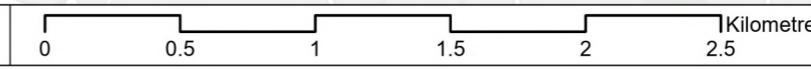
Coordinate system: British National Grid; Datum: OSGB 1936
 Data sources: © Crown copyright and database rights 2026 Ordnance Survey 0100031673. Sources: Esri, TomTom, Garmin, FAO, NOAA, USGS, © OpenStreetMap contributors, and the GIS User Community, Contains OS data © Crown Copyright and database right 2025. Contains data from OS Zoomstack

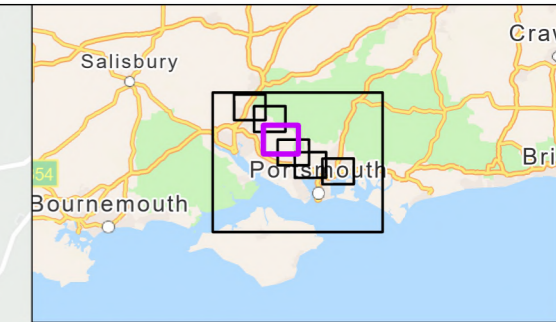
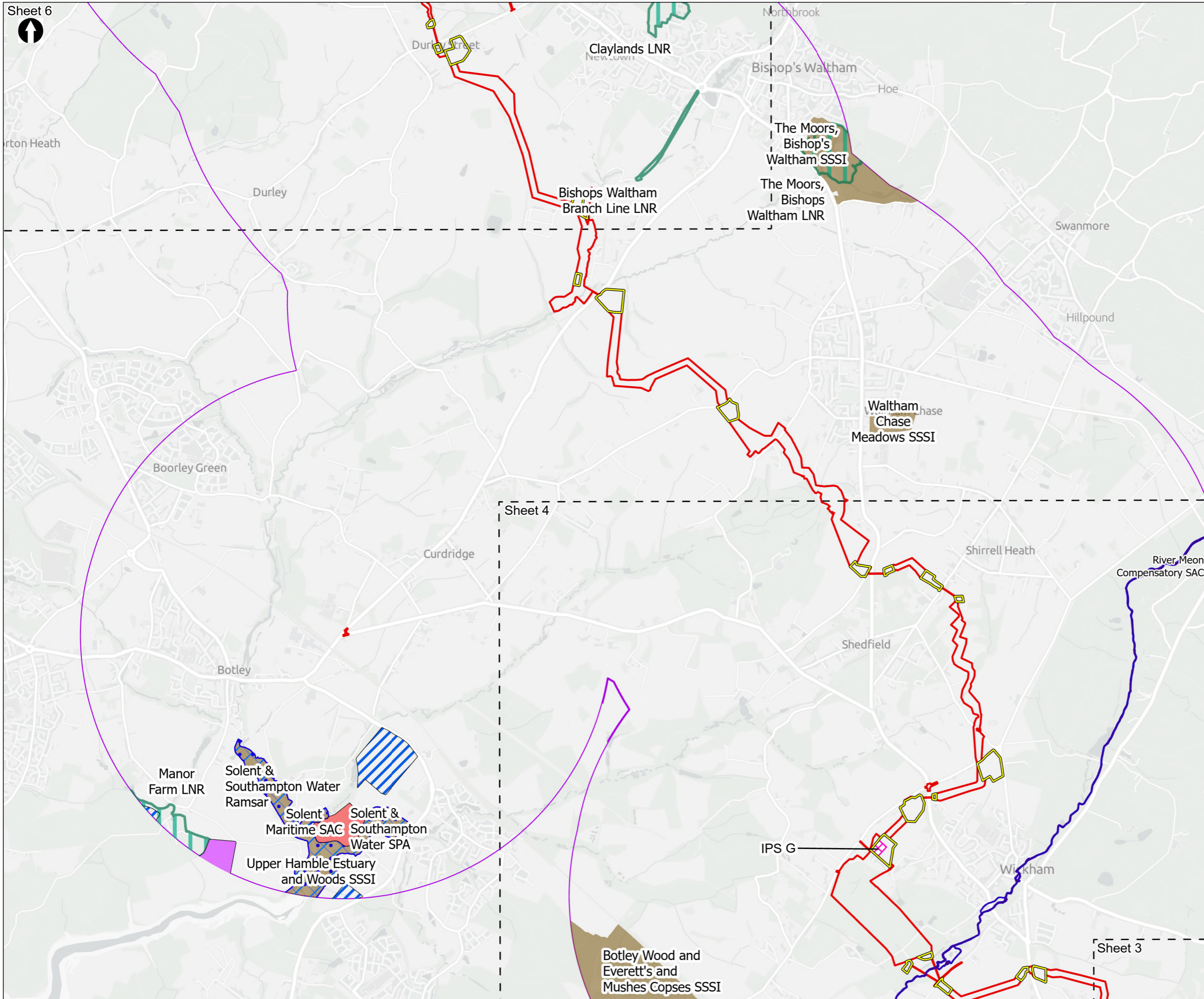
PROJECT TITLE
 Hampshire Water Transfer and Water Recycling Project



Figure 8.1
 Statutory designated sites within the desk study area
 Sheet 4 of 7

| | | | |
|--------------------------------|--------------------------|-----------------------|------------------------|
| Drawn MW | GIS Checked DL | Checked MP | Approved AK |
| Scale at A3 1:28,000 | Status Final | Revision 05 | Security STD |





- Order Limits
- Sheet Extent Boxes 1:25K
- Desk Study Area
- Construction Compounds
- Above Ground Plant**
- Intermediate Pumping Station
- Designated Sites**
- Special Areas of Conservation (SAC)
- Special Protection Areas (SPA)
- Ramsar site
- Sites of Special Scientific Interest (SSSI)
- Local Nature Reserve (LNR)
- River Meon Compensatory SAC Habitat
- Solent Waders Brent Goose Strategy**
- Primary Support Area
- Secondary Support Area
- Low Use Site

Coordinate system: British National Grid; Datum: OSGB 1936
 Data sources: © Crown copyright and database rights 2026 Ordnance Survey 0100031673. Sources: Esri, TomTom, Garmin, FAO, NOAA, USGS, © OpenStreetMap contributors, and the GIS User Community, Contains OS data © Crown Copyright and database right 2025. Contains data from OS Zoomstack

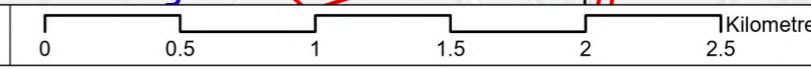
PROJECT TITLE
 Hampshire Water Transfer and Water Recycling Project

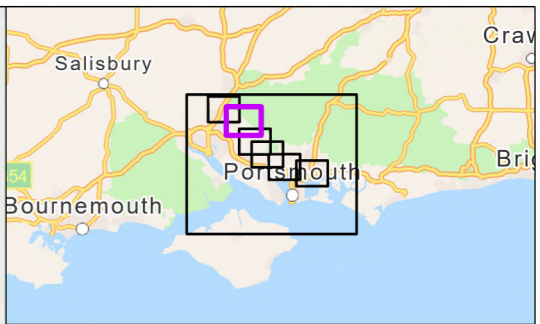
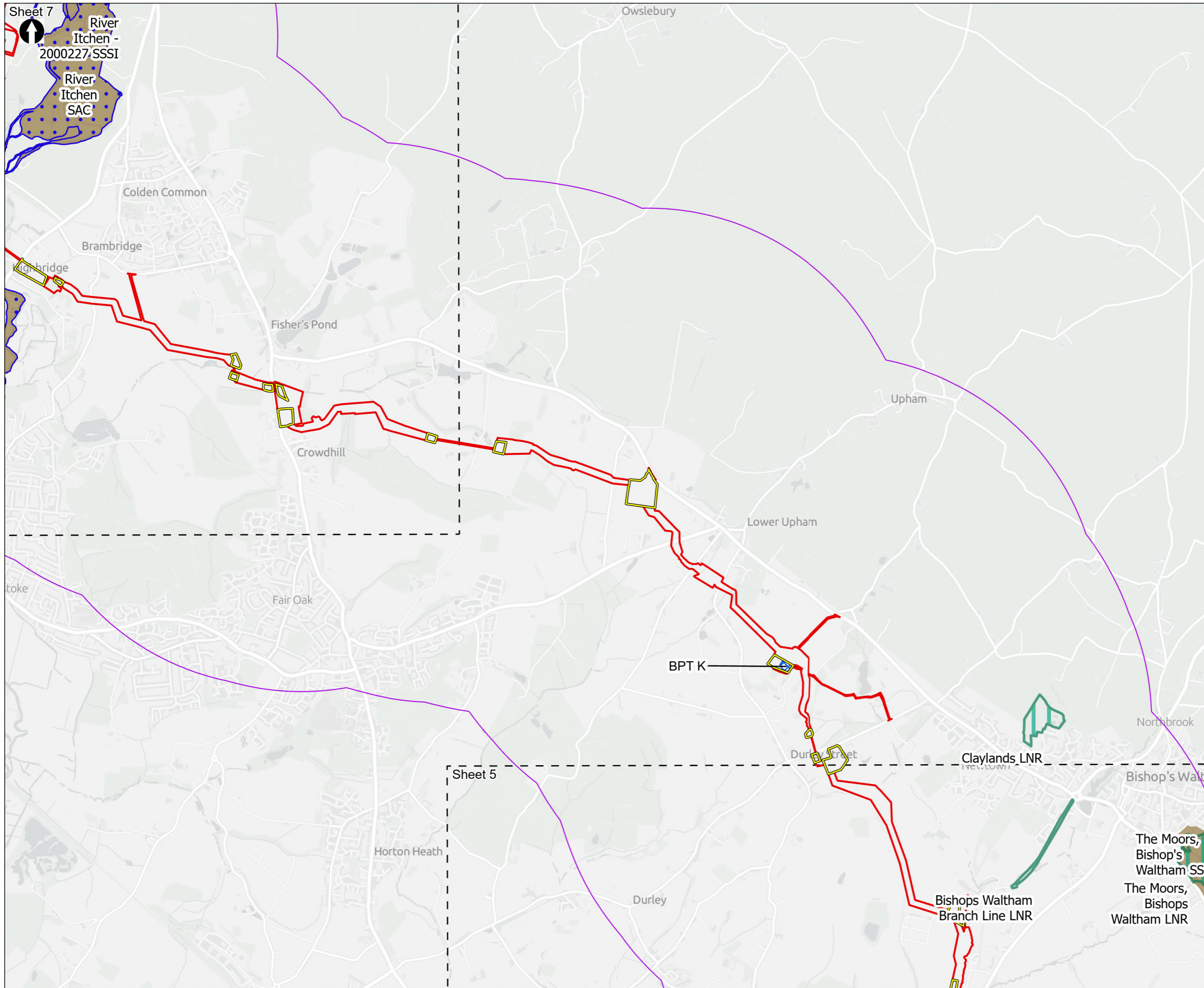


Figure 8.1
 Statutory designated sites within the desk study area
 Sheet 5 of 7

| | | | |
|--------------------------------|--------------------------|-----------------------|------------------------|
| Drawn MW | GIS Checked DL | Checked MP | Approved AK |
| Scale at A3 1:28,000 | Status Final | Revision 05 | Security STD |

Drawing Number
PC5223-RHD-ES-ZZ-D-Z-0026





- Order Limits
- Sheet Extent Boxes 1:25K
- Desk Study Area
- Construction Compounds
- Above Ground Plant**
- X Break Pressure Tank
- Designated Sites**
- Special Areas of Conservation (SAC)
- Sites of Special Scientific Interest (SSSI)
- Local Nature Reserve (LNR)

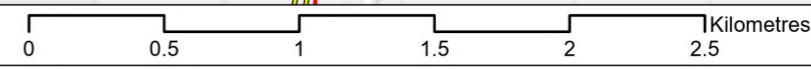
Coordinate system: British National Grid; Datum: OSGB 1936
 Data sources: © Crown copyright and database rights 2026 Ordnance Survey 0100031673. Sources: Esri, TomTom, Garmin, FAO, NOAA, USGS, © OpenStreetMap contributors, and the GIS User Community, Contains OS data © Crown Copyright and database right 2025. Contains data from OS Zoomstack

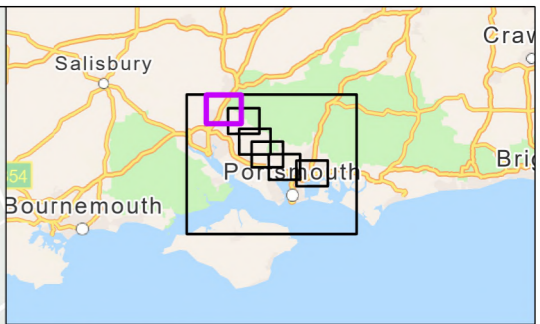
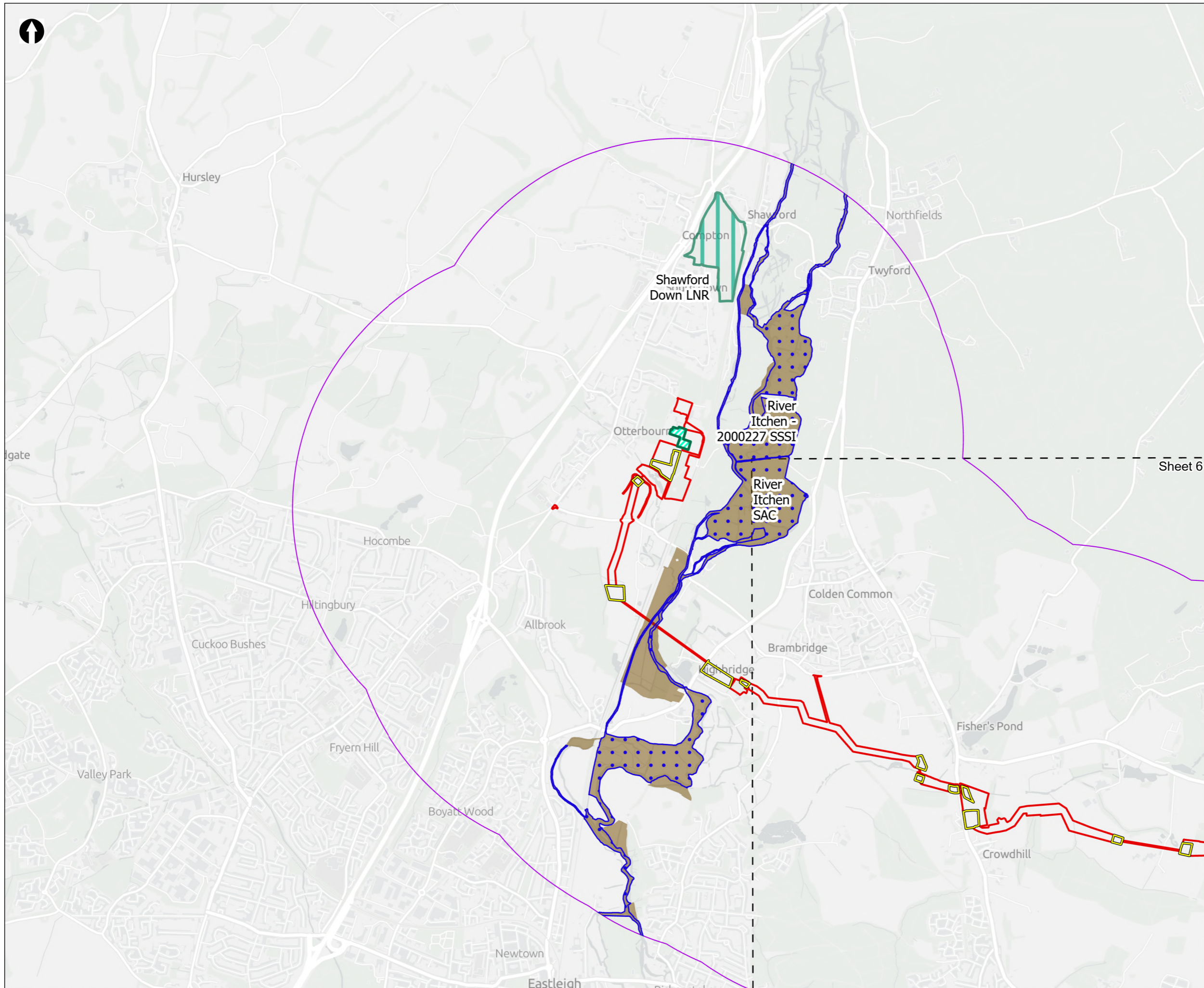
PROJECT TITLE
 Hampshire Water Transfer and Water Recycling Project



Figure 8.1
 Statutory designated sites within the desk study area
 Sheet 6 of 7

| | | | |
|--------------------------------|--------------------------|-----------------------|------------------------|
| Drawn MW | GIS Checked DL | Checked MP | Approved AK |
| Scale at A3 1:28,000 | Status Final | Revision 05 | Security STD |





- Order Limits
 - Sheet Extent Boxes 1:25K
 - Desk Study Area
 - Construction Compounds
 - Limits of Deviation for Otterbourne INNS Treatment Plant
- Designated Sites**
- Special Areas of Conservation (SAC)
 - Sites of Special Scientific Interest (SSSI)
 - Local Nature Reserve (LNR)

Coordinate system: British National Grid; Datum: OSGB 1936
 Data sources: © Crown copyright and database rights 2026 Ordnance Survey 0100031673. Sources: Esri, TomTom, Garmin, FAO, NOAA, USGS, © OpenStreetMap contributors, and the GIS User Community, Contains OS data © Crown Copyright and database right 2025. Contains data from OS Zoomstack

PROJECT TITLE
 Hampshire Water Transfer and Water Recycling Project



Figure 8.1
 Statutory designated sites within the desk study area
 Sheet 7 of 7

| | | | |
|--------------------------------|--------------------------|-----------------------|------------------------|
| Drawn MW | GIS Checked DL | Checked MP | Approved AK |
| Scale at A3 1:28,000 | Status Final | Revision 05 | Security STD |

